

HANNAH'S HOUSE



“Hannah’s House”

Aaron Friedman built a Victorian-style farmhouse with a contemporary flair for his youngest granddaughter, Hannah. Similar to the way he went about designing “Alison’s House,” Friedman based the exterior of “Hannah’s House” on a design offered for sale in a catalog of contemporary house plans. That design was just a starting place, however. As reported by Marion Valentino in the *Mobile Press Register*, Friedman modified the original look of the exterior elevations to include an octagonal front corner topped by a Queen Anne turret.¹

As with most of his other miniature houses Friedman did not work from detailed plans. Instead, before beginning construction on Hannah’s House Friedman created a one-eighth inch scale model from thin pieces of wood to work out design issues and proportions. “With the model, I can tell if what I want to do will be workable,” he said. “If it isn’t, then I make the necessary changes.”²

Friedman painted the exterior of Hannah’s House bright blue, with white trim around the doors and windows. The front porch is framed by wooden banisters and railings, turned wood columns, and dainty trim under the overhanging soffit, all painted white to match. In keeping with the Victorian farmhouse look, the roof is a combination of standing seam copper panels and cedar fish scale shingles painted to match the copper. The front door features a beautiful leaded and frosted glass window, and Friedman added two octagonal stained glass windows to the original design.



The front and sides of the house are landscaped with green bushes and blooming flowers, and lush ferns are suspended in baskets hanging above the front porch. In the back of the house, just outside the kitchen, a patio with dark grey slate pavers, redwood chairs and table, floral seat cushions and umbrella, and barbecue grill invites residents and guests to relax and enjoy a warm summer evening.

Downstairs, the entry foyer, parlor, and dining room feature walnut floors. The parlor is furnished with a sofa and two wing chairs upholstered in a beige fabric with lavender and teal

floral pattern. The drapes and valences surrounding the windows are made from the same fabric. A pink rug with teal and beige border is on the floor.



Above: Parlor. Right: Dining Room.



The adjacent dining room is decorated in a gray and pink color scheme, with a petit point rug made by Sarah Friedman, striped wallpaper, and mahogany Queen Anne style furniture that matches the furnishings in the parlor. A vase filled with beautiful blooming red roses made by family friend Pearl Brook is set in the center of the dining table.

The kitchen is next to the dining room. Here, the bright white kitchen cabinets, breakfast table and chairs, and appliances stand out in stark contrast against the brown and white striped wallpaper and chocolate brown and white ceramic tile floor set in a checkerboard pattern. Sarah Friedman needlepointed the white hand towels with burgundy checkerboard trim hanging by the kitchen sink. These match the delicate lace window treatments with burgundy trim made by Pearl Brook.



Downstairs Bedroom

room. Gauzy lace curtains and valences cover the windows, and a picture of Hannah with her older sisters, twins Jessica and Kaitlin, hangs above the wingback chair. Plush pink wall-to-wall carpeting creates a bright backdrop to all of the furnishings and finishes in this room.

A bedroom and bathroom on the opposite side of the front entry complete the first floor layout. The bed, nightstand, mirrored dressing table, and armoire in this bedroom are painted light green with a floral design. The bed has a gray coverlet with white dots. Other furniture includes a wingback chair and ottoman and a chaise lounge that are upholstered in floral patterns that blend with the other colors in the

The pink theme of the bedroom carpeting continues into the adjacent bathroom, which has a blue and pink tile floor, blue porcelain fixtures, and frilly pink lace covering the vanity, stool, and window valences. The tub, toilet and sink have hand-painted floral designs and gold fixtures. The Friedmans used the same wallpaper in this bathroom as in the bedroom next to it.



Downstairs Bathroom

A formal walnut staircase leads from the ground floor to the second floor. The upstairs landing is furnished with an antique drop-front secretary desk and an upholstered bench. The flooring here is the same dark walnut used downstairs. The master bedroom and bath are to one side of the landing and a third bedroom and bath are on the other side.

The master bedroom has a dark mahogany four poster bed, chest of drawers, nightstand, and blanket chest set atop a rich maroon carpet. A framed photo of Hannah hangs over the bed.



Master Bedroom and Bathroom. Photo by Priscilla Verigan

A loveseat with floral upholstery and mahogany coffee table create a sitting area at the front of the room. A mahogany writing desk and chair in the bay window and a television set and stereo system in the bedroom's bookcase provide the option of work or relaxation.

The maroon carpet continues into the master bath, where one can see a pink porcelain bathtub, sink, and toilet.

Sarah Friedman made the stacks of pink towels with maroon accent stripes. More sheer lace curtains cover the windows at this end of the room.

The other bedroom on the second floor is decorated with pale green striped wallpaper and matching carpet. The room is furnished with a richly embellished mahogany bed, armoire, dressing table and stool, and clothes valet. A wingback chair and ottoman are covered in pale green and pink floral upholstery that blends perfectly with the wallpaper and carpet.



Upstairs Bedroom

At the far end of this bedroom there is a bay window. That area is furnished as a nursery. It has a white wooden crib and rocking chair, as well as a child's rocking horse and other toys. As reported by Marion Valentino of the *Press-Register*, Friedman explained, "You will notice there are no walls between some of the rooms. If there were walls, like between the bedroom and the nursery [and between the master bedroom and master bathroom], you would not be able to see into the room in back."³



Above: Nursery. Below: Upstairs Bathroom.

The Friedmans continued the pale green carpet and wallpaper from the bedroom into the adjacent bathroom. This bathroom has ivory colored fixtures with hand-painted floral designs and gold handles. Sarah Friedman made the piles of pale green towels with long fringes seen stacked on a wicker corner shelf unit.



According to Valentino of the *Press-Register*, Friedman said, "So much in miniature work is improvised" as he pointed out items such as benches made from film containers and bottle caps that were made into baskets and flower containers.⁴ Sarah and Aaron coordinated the colors and collaborated to choose the furniture, accessories, floor and wall coverings, and upholstery used throughout the house. The couple's long-time friend, Pearl Brook, made many of the curtains, bedspreads, flowers, and other tiny accessories seen in Hannah's House.

Hannah's House was completed in 1994. Even though the Friedmans had added a large room to their house several years earlier in which they displayed all of the miniature houses, after completing Hannah's house Aaron said, "If I build another one, we will have to move!"⁵



Information compiled by Jere Friedman. All photos by Jere Friedman unless otherwise noted. © 2020 Jere Friedman

Aaron Friedman with "Hannah's House" *Photo courtesy of Alabama Department of Archives and History. Donated by Alabama Media Group. Photo by Mike Kittrell, Mobile Press-Register.*

Sources:

- Valentino, Marion. "Aaron Friedman's latest dollhouse for his latest granddaughter." *The Mobile Register* 6 Jan. 1994: D-1. Print.
- Fields, Mary Durland. "Grandfather's Gallery." *Nutshell News* Jan. 1993: 36-41. Print.

Endnotes:

¹ Valentino, Marion. "Aaron Friedman's latest dollhouse for his latest granddaughter." *The Mobile Register* 6 Jan. 1994: D-1. Print.

² *ibid.*

³ *ibid.*

⁴ *ibid.*

⁵ As quoted in Fields, Mary Durland. "Grandfather's Gallery." *Nutshell News* Jan. 1993: 36-41. Print.

Additional photos of Hannah's House:



Rear View of Hannah's House

[Continued on next page.]



Above: Back Patio. Below: Exterior Details



**Right: Front Entry.
Below: Upstairs
Landing.**



Above: Details of Downstairs Bathroom

This page: Kitchen



Photo above by Priscilla Verigan



Photo above by Priscilla Verigan





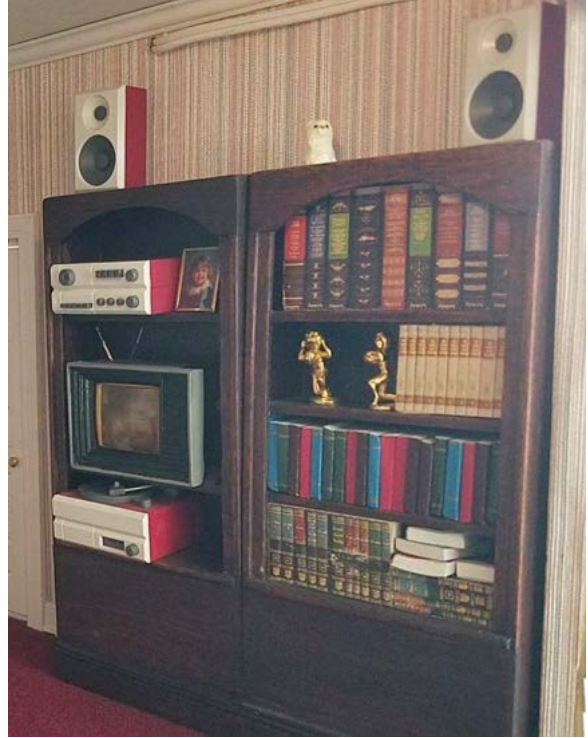
Kitchen Detail: Mug with Hannah's name imprinted on it



Detail of Upstairs Bathroom showing tub with hand painted floral design



Detail of Master Bedroom



Details of Master Bedroom. Above left: Writing Desk and Chair. Above right: Bookcase with entertainment center.



Master Bathroom



Above and below: Details of Downstairs Bedroom. Note the photo of Hannah with her twin sisters, Jessica and Kaitlin, on the wall above the wingback chair.

